

# 1070KE/KE-7090

## SERVICE MANUAL

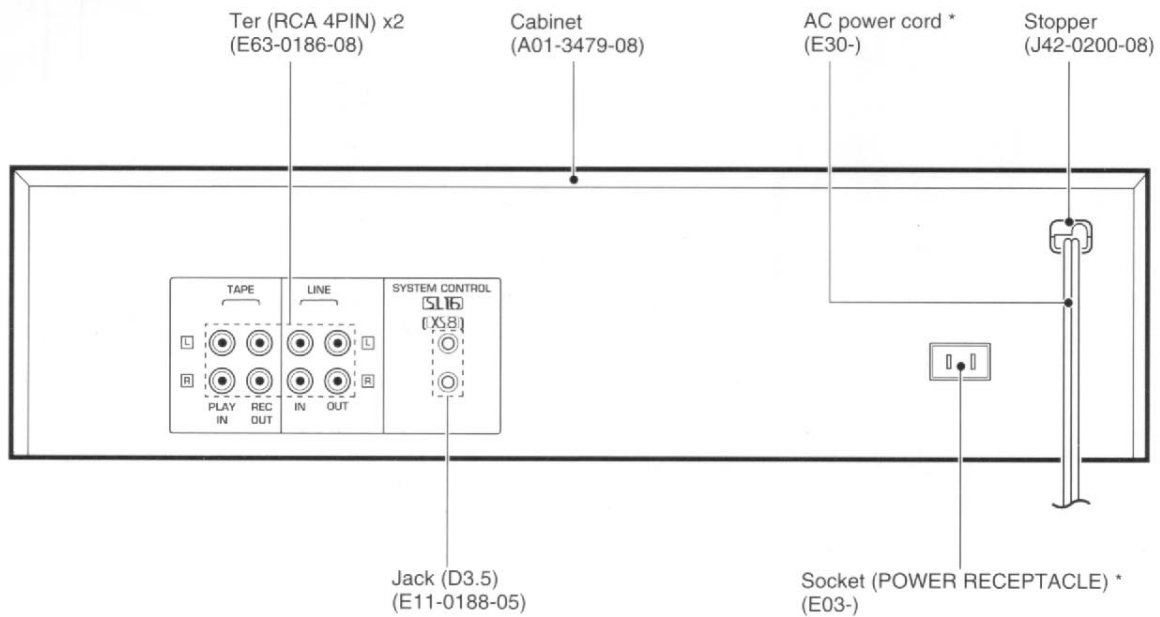
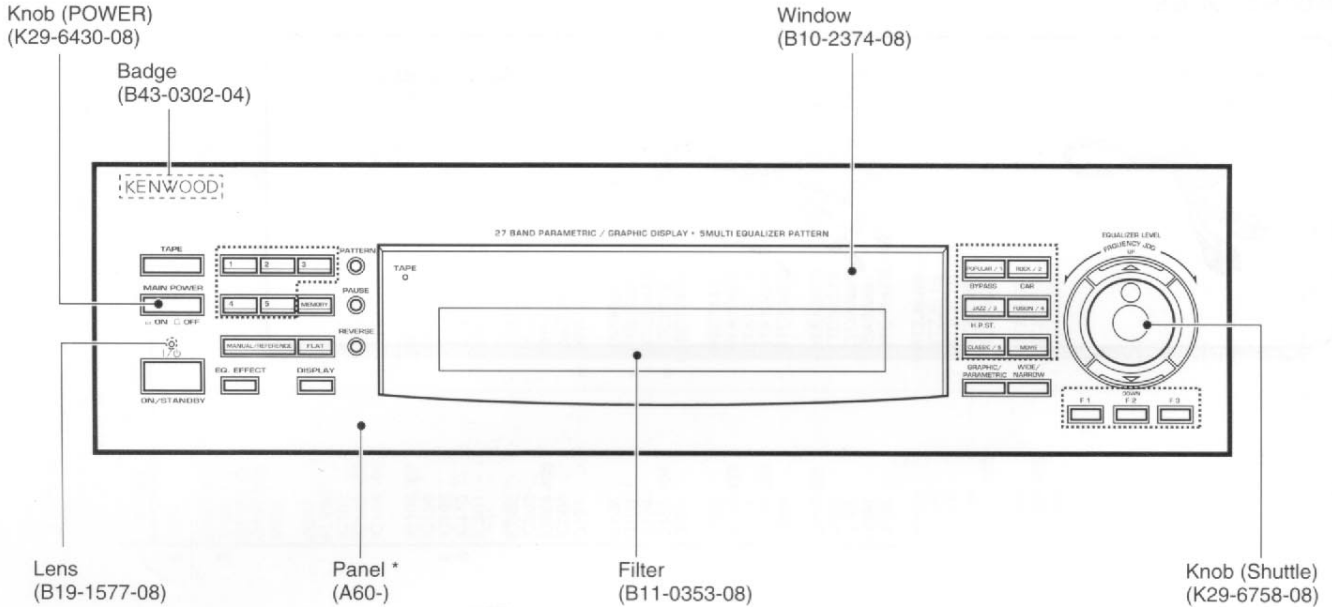
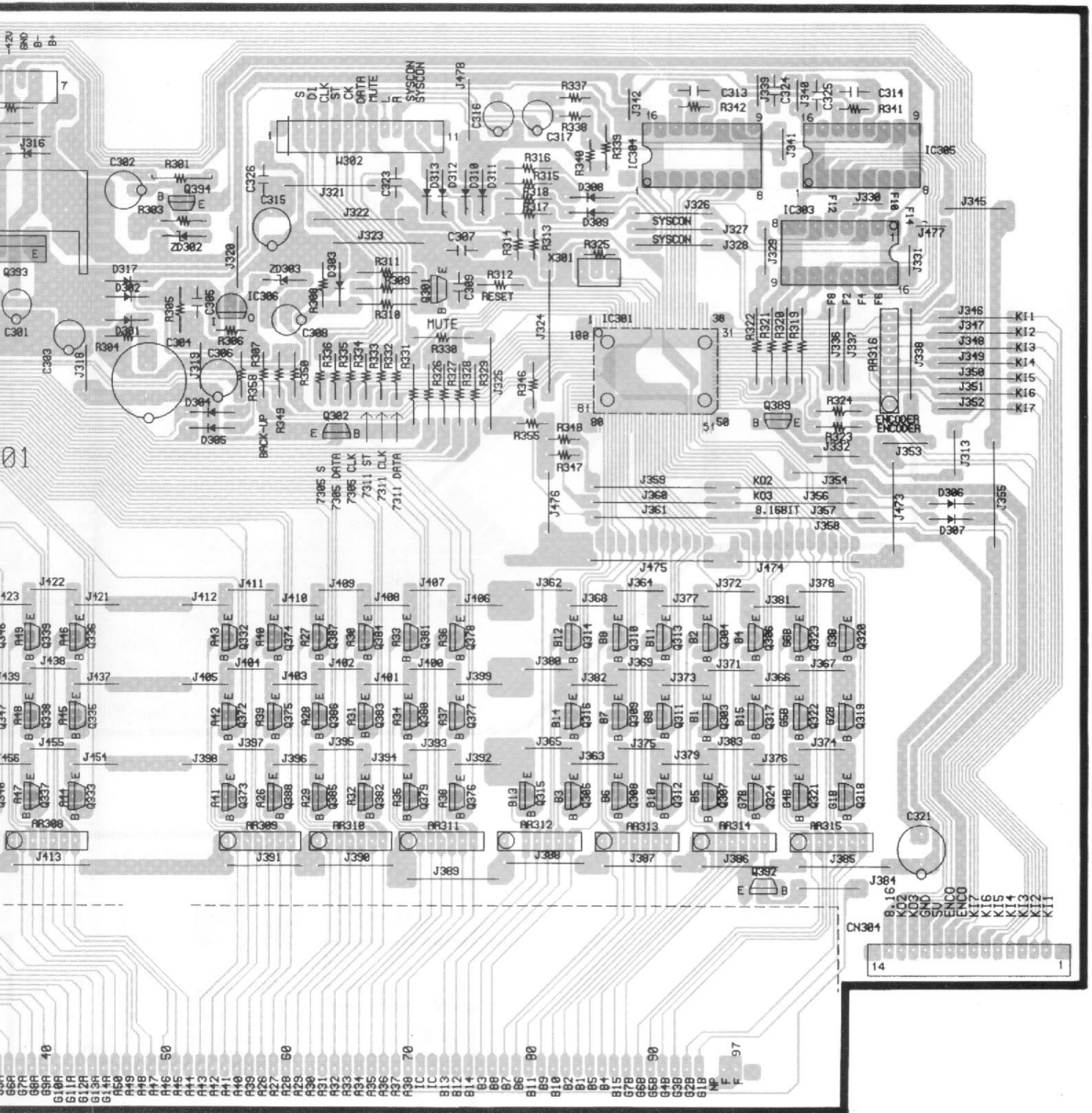


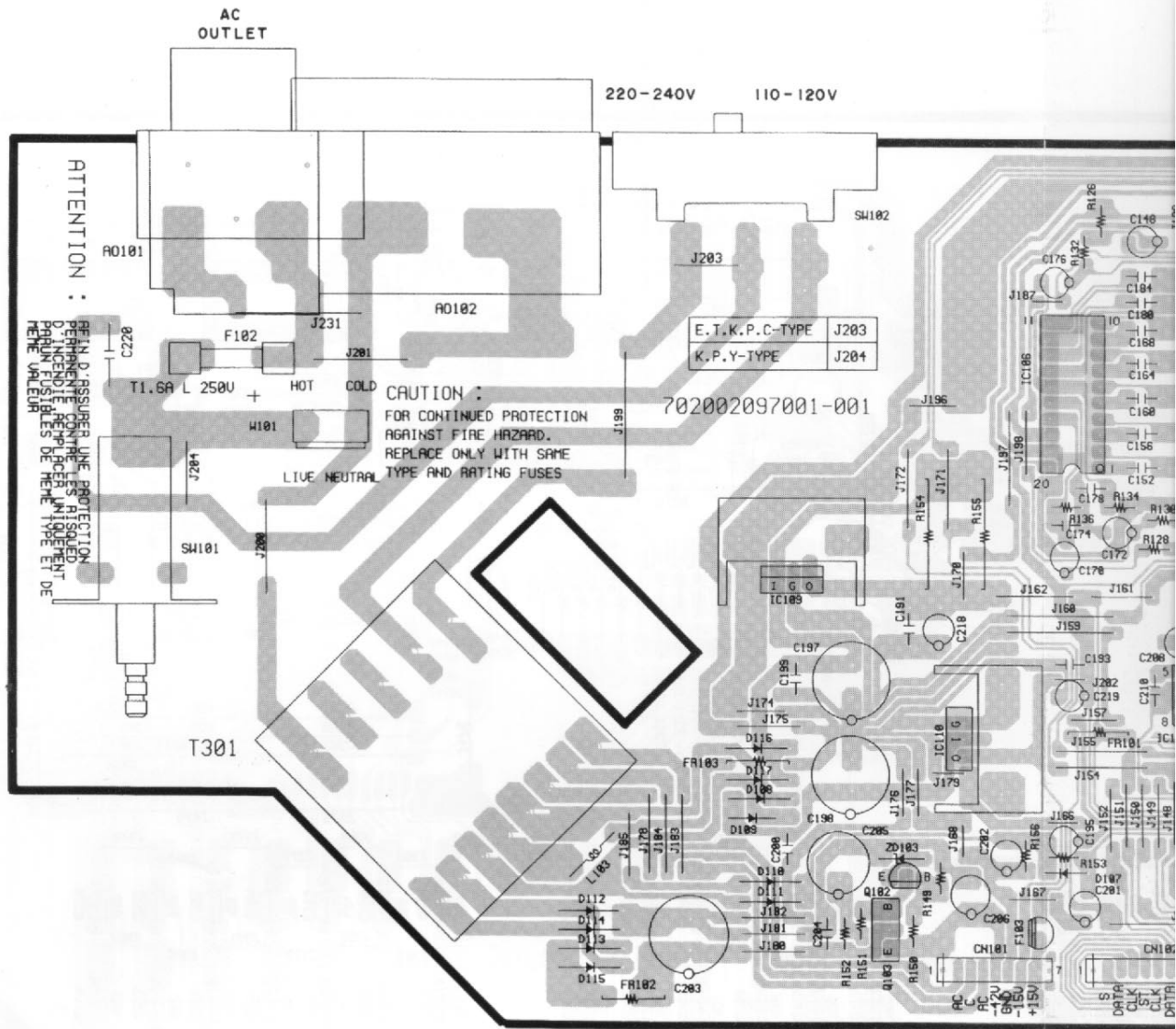
Illustration is KE-7090.

\* Refer to parts list on page 18.



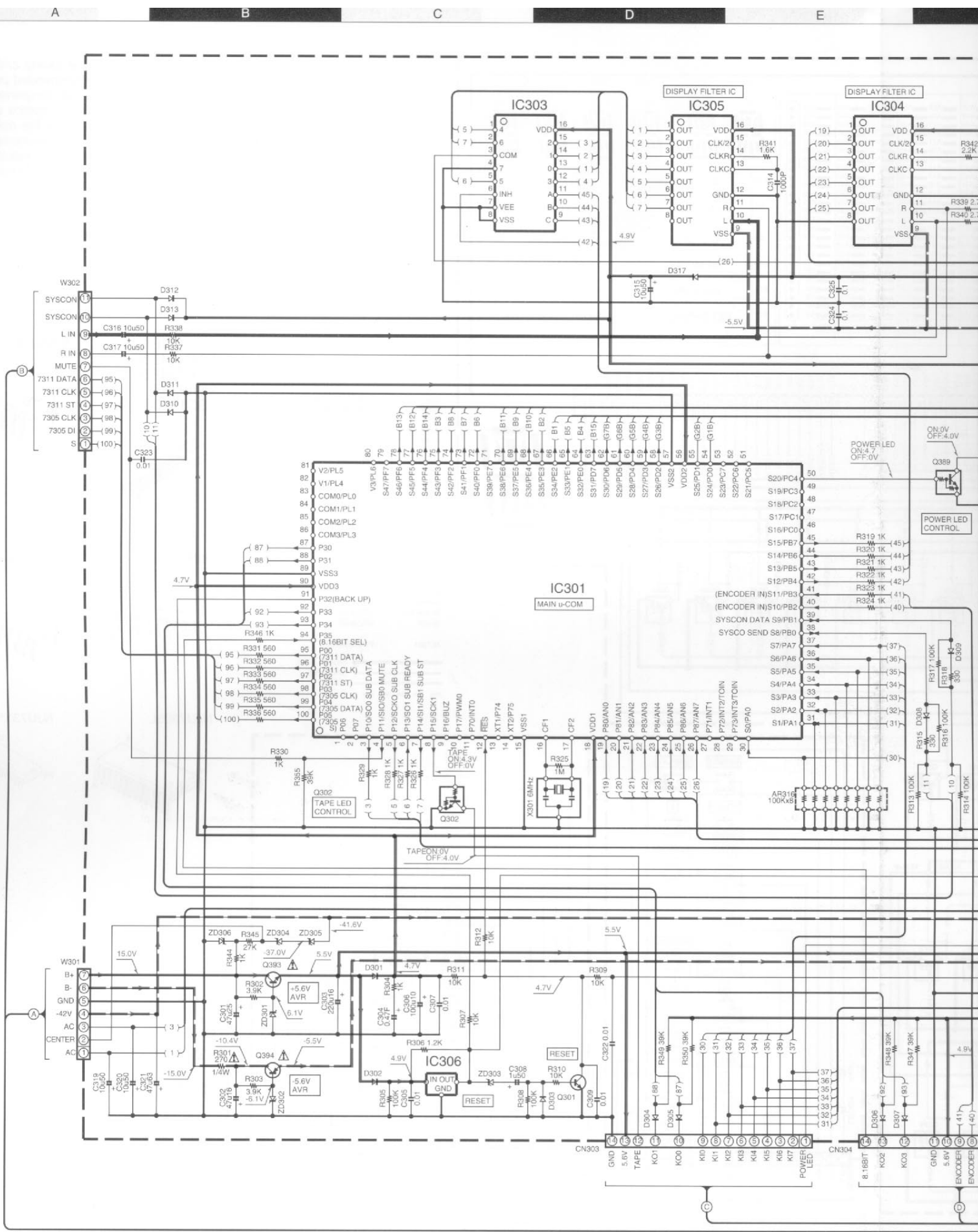


# (PC BOARD(Component side view))









A

B

C

D

E

2

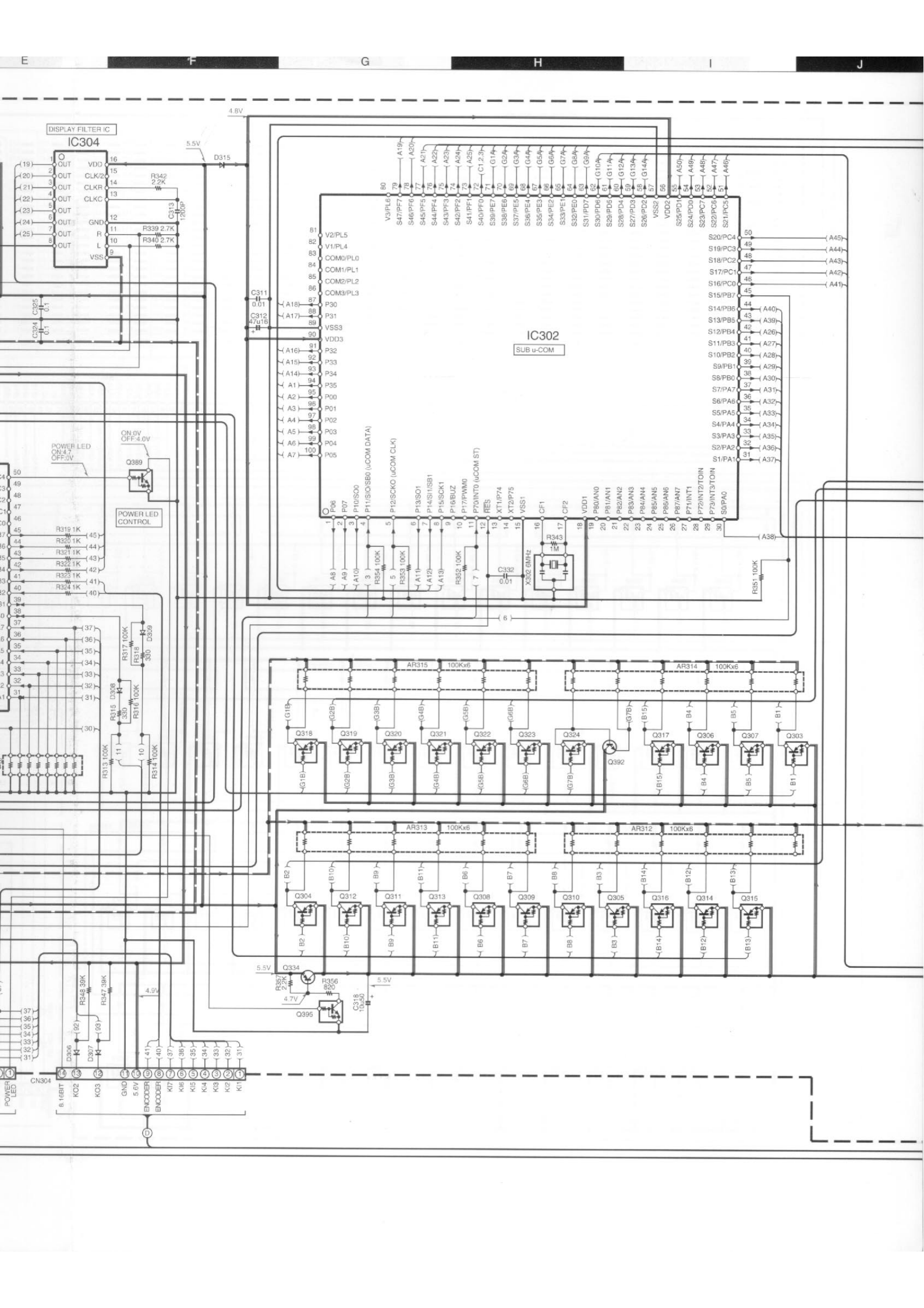
3

4

5

6

7



DISPLAY FILTER IC  
IC304

IC302  
SUB u-COM

POWER LED CONTROL

ON: 0V  
OFF: 4.0V

POWER LED  
ON: 4.7V  
OFF: 3.0V

Q389

Q392

Q395

Q303

Q304

Q305

Q306

Q307

Q308

Q309

Q310

Q311

Q312

Q313

Q314

Q315

Q316

Q317

Q318

Q319

Q320

Q321

Q322

Q323

Q324

Q325

Q326

Q327

Q328

Q329

Q330

Q331

Q332

Q333

Q334

Q335

Q336

Q337

Q338

Q339

Q340

Q341

Q342

Q343

Q344

Q345

Q346

Q347

Q348

Q349

Q350

Q351

Q352

Q353

Q354

Q355

Q356

Q357

Q358

Q359

Q360

Q361

Q362

Q363

Q364

Q365

Q366

Q367

Q368

Q369

Q370

Q371

Q372

Q373

Q374

Q375

Q376

Q377

Q378

Q379

Q380

Q381

Q382

Q383

Q384

Q385

Q386

Q387

Q388

Q389

Q390

Q391

Q392

Q393

Q394

Q395

Q396

Q397

Q398

Q399

Q400

Q401

Q402

Q403

Q404

Q405

Q406

Q407

Q408

Q409

Q410

Q411

Q412

Q413

Q414

Q415

Q416

Q417

Q418

Q419

Q420

Q421

Q422

Q423

Q424

Q425

Q426

Q427

Q428

Q429

Q430

Q431

Q432

Q433

Q434

Q435

Q436

Q437

Q438

Q439

Q440

Q441

Q442

Q443

Q444

Q445

Q446

Q447

Q448

Q449

Q450

Q451

Q452

Q453

Q454

Q455

Q456

Q457

Q458

Q459

Q460

Q461

Q462

Q463

Q464

Q465

Q466

Q467

Q468

Q469

Q470

Q471

Q472

Q473

Q474

Q475

Q476

Q477

Q478

Q479

Q480

Q481

Q482

Q483

Q484

Q485

Q486

Q487

Q488

Q489

Q490

Q491

Q492

Q493

Q494

Q495

Q496

Q497

Q498

Q499

Q500

Q501

Q502

Q503

Q504

Q505

Q506

Q507

Q508

Q509

Q510

Q511

Q512

Q513

Q514

Q515

Q516

Q517

Q518

Q519

Q520

Q521

Q522

Q523

Q524

Q525

Q526

Q527

Q528

Q529

Q530

Q531

Q532

Q533

Q534

Q535

Q536

Q537

Q538

Q539

Q540

Q541

Q542

Q543

Q544

Q545

Q546

Q547

Q548

Q549

Q550

Q551

Q552

Q553

Q554

Q555

Q556

Q557

Q558

Q559

Q560

Q561

Q562

Q563

Q564

Q565

Q566

Q567

Q568

Q569

Q570

Q571

Q572

Q573

Q574

Q575

Q576

Q577

Q578

Q579

Q580

Q581

Q582

Q583

Q584

Q585

Q586

Q587

Q588

Q589

Q590

Q591

Q592

Q593

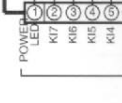
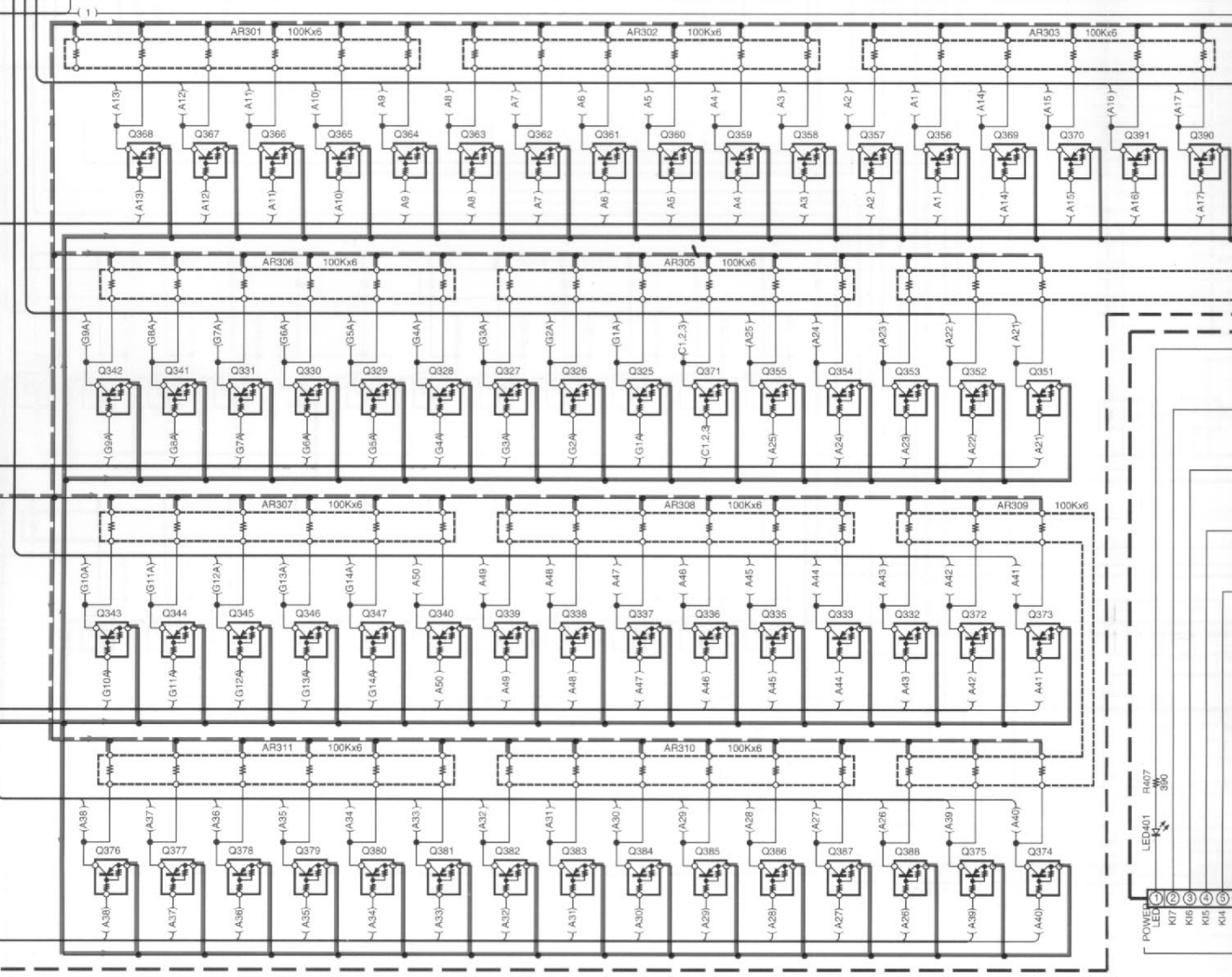
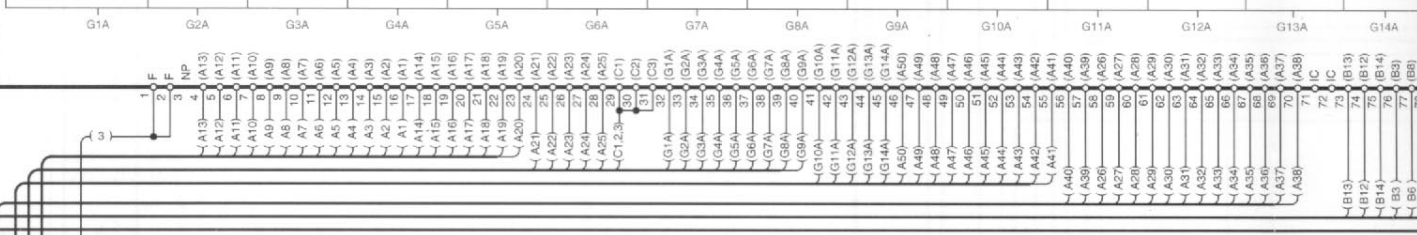
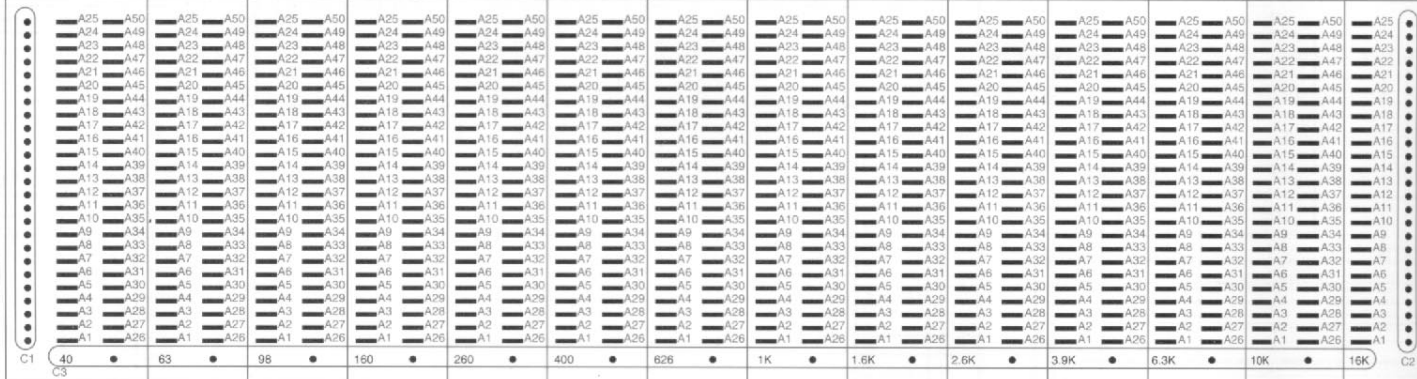
Q594

Q595

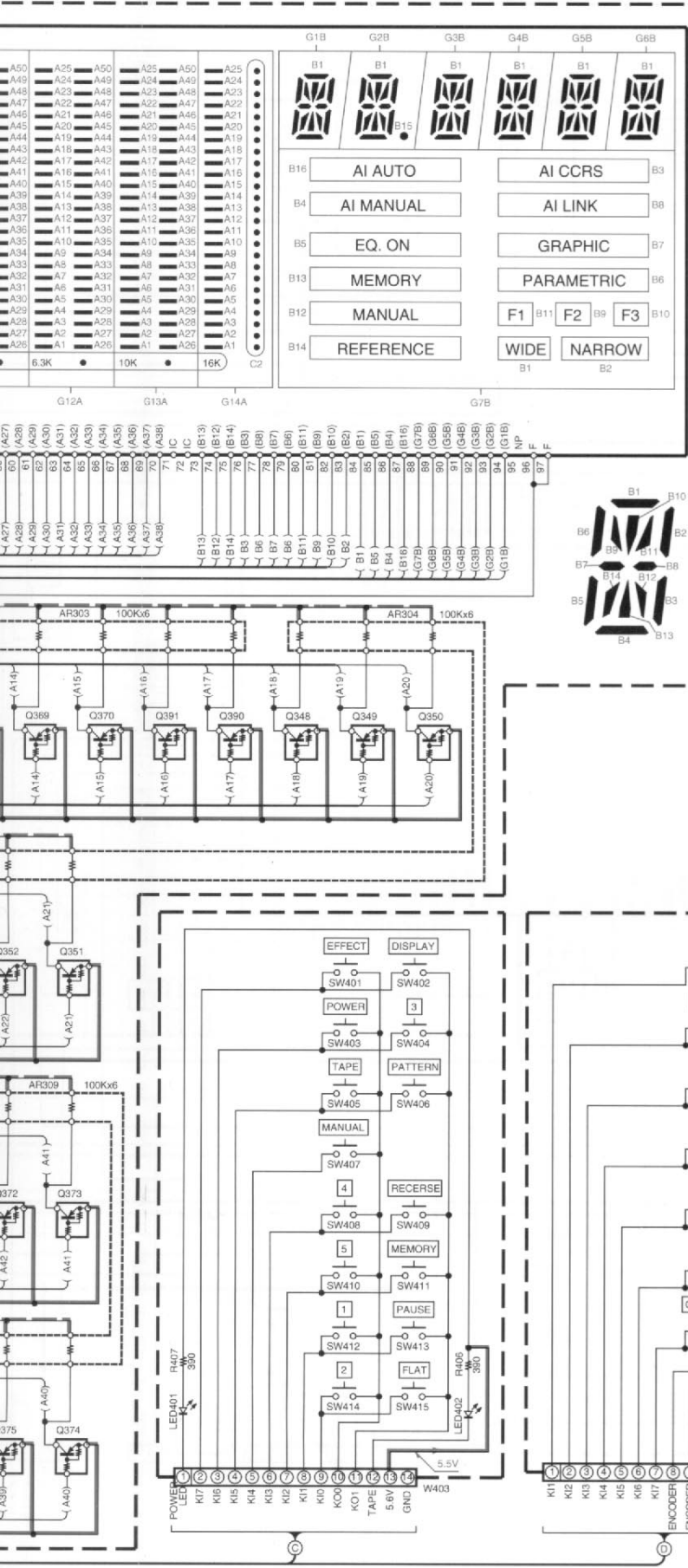
Q596

</

FLT301







**CAUTION:** For continued safety, replace safety critical components only with manufacturer's recommended parts (refer to parts list).  $\Delta$  indicates safety critical components. For continued protection against risk of fire, replace only with same type and rating fuse(s). To reduce the risk of electric shock, leakage-current or resistance measurements shall be carried out (exposed parts are acceptably insulated from the supply circuit) before the appliance is returned to the customer.

The DC voltage is an actual reading measured with a high impedance type voltmeter. The measurement value may vary depending on the measuring instruments used or on the product.

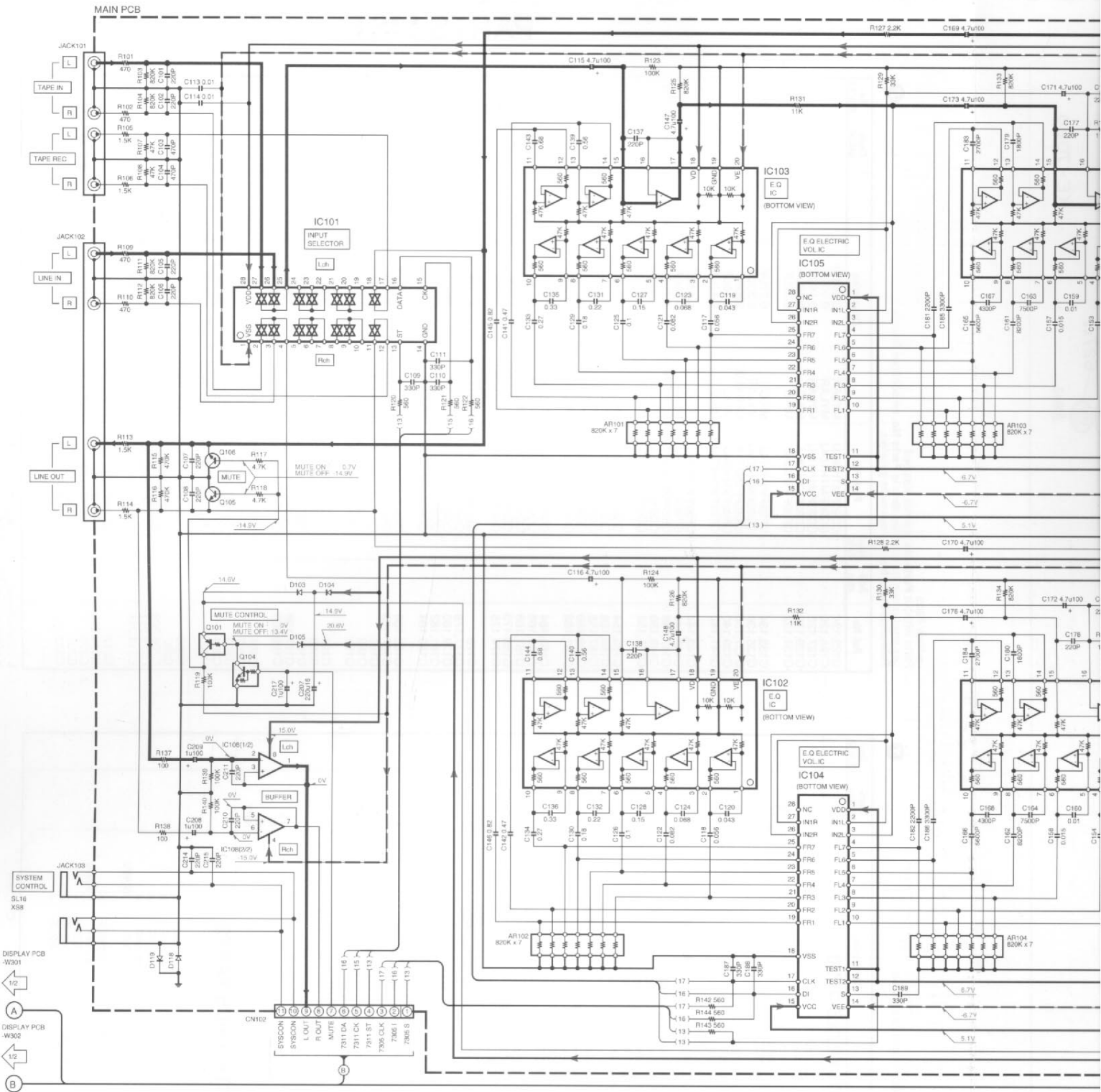
- |                  |                  |           |  |
|------------------|------------------|-----------|--|
| IC301            | : LC867224A-5D35 | NJM4558DD |  |
| IC302            | : LC867224A-5D38 | DTA124ES  |  |
| IC303            | : TC4051BP       | DTC114ES  |  |
| IC304,305        | : XR1091         | DTC124ES  |  |
| IC306            | : KIA7039P       | 2SA933S   |  |
| Q301             | : 2SC1740S       | 2SC1740S  |  |
| Q302,389,395     | : DTC114ES       | M5229P    |  |
| Q303-333         | : DTA124ES       | TC4051BP  |  |
| Q334             | : KTA1271Y       | NJU7305L  |  |
| Q335-388,390,391 | : DTA124ES       | NJU7311AL |  |
| Q392             | : KTC3227Y       |           |  |
| Q393             | : KTD2058Y       |           |  |
| Q394             | : 2SA933S        |           |  |
- D301-313,315,317
- 1S5131
  - ZD301,302 : MTZJ6.2B
  - ZD303 : MTZJ2.7B
  - ZD304,305 : MTZJ4.7B
  - ZD306 : MTZJ5.6B
- FLT301 : FIP21BMW24
- Legend:  
 ——— SIGNAL LINE  
 ——— GND LINE  
 - - - +B LINE  
 - - - -B LINE

KE-7090(M) (1/2)

Y09-4560-10

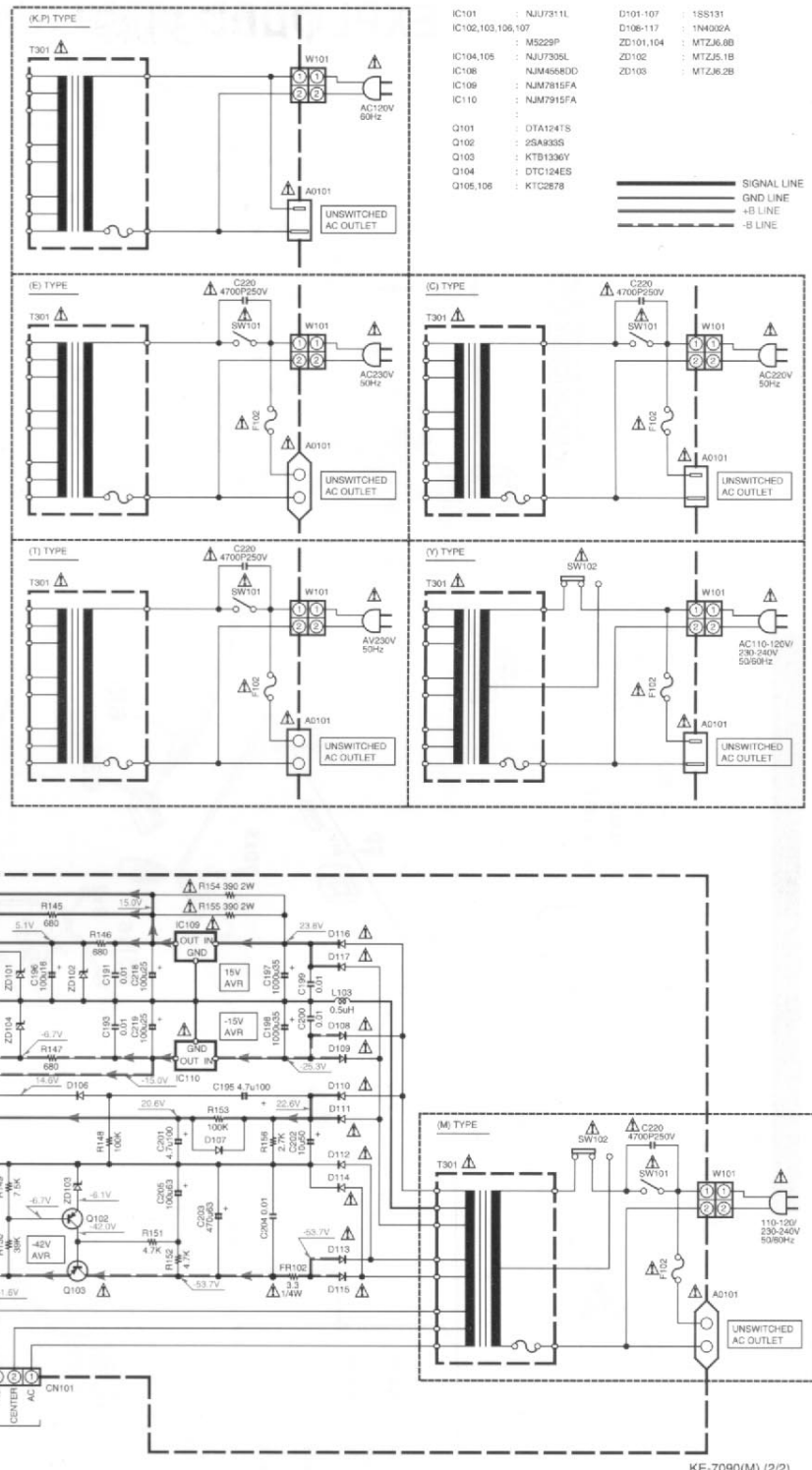
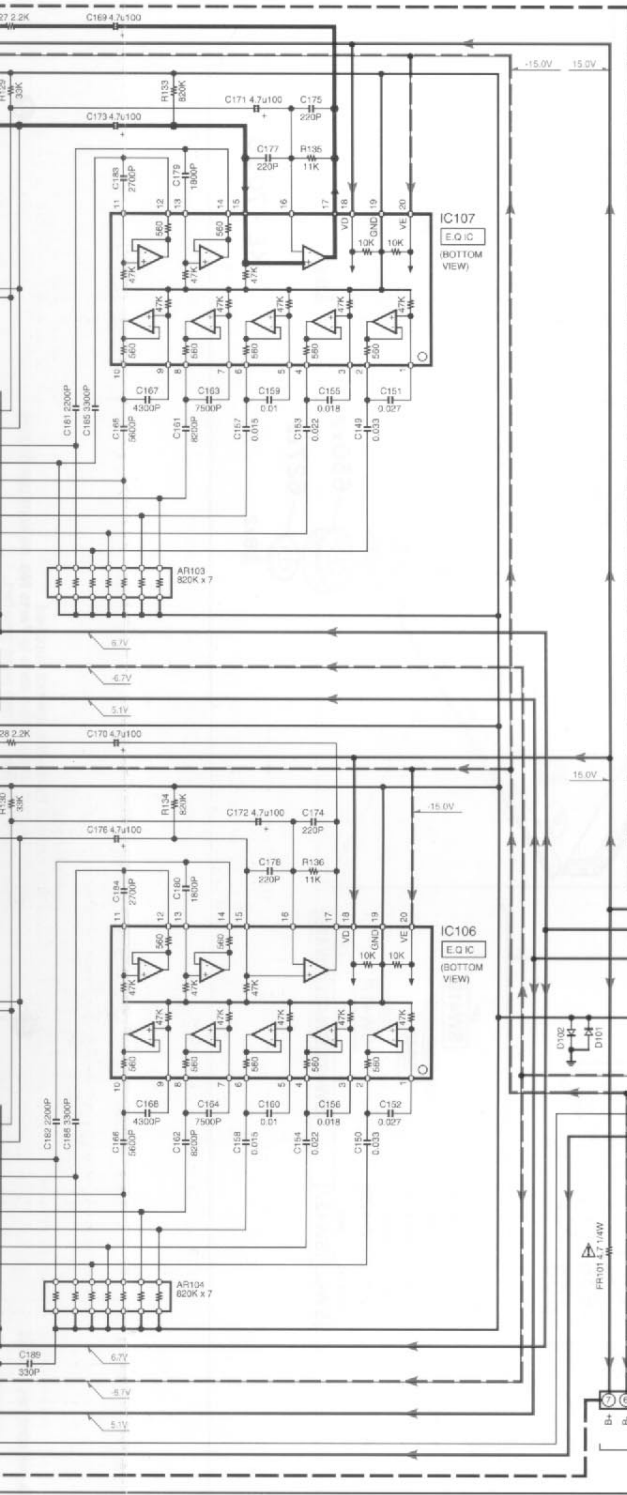
# 1070KE/KE-7090

## KENWOOD



**CAUTION:** For continued safety, replace safety critical components only with manufacturer's recommended parts (refer to parts list).  $\Delta$  indicates safety critical components. For continued protection against risk of fire, replace only with same type and rating fuse(s). To reduce the risk of electric shock, leakage-current or resistance measurements shall be carried out (exposed parts are acceptably insulated from the supply circuit) before the appliance is returned to the customer.

The DC voltage is an actual reading measured with a high impedance type voltmeter. The measurement value may vary depending on the measuring instruments used or on the product.



- |       |                   |           |       |       |       |      |      |      |      |          |              |          |          |           |       |       |        |         |          |          |          |  |
|-------|-------------------|-----------|-------|-------|-------|------|------|------|------|----------|--------------|----------|----------|-----------|-------|-------|--------|---------|----------|----------|----------|--|
| IC101 | IC102,103,106,107 | IC104,105 | IC108 | IC109 | IC110 | Q101 | Q102 | Q103 | Q104 | Q105,106 | Q107,108,109 | D101-107 | D108-117 | ZD101,104 | ZD102 | ZD103 | 1SS131 | 1N4002A | MTZJ6.8B | MTZJ6.1B | MTZJ6.2B |  |
|       |                   |           |       |       |       |      |      |      |      |          |              |          |          |           |       |       |        |         |          |          |          |  |
- Q101 : DTA124TS  
 Q102 : 2SA935S  
 Q103 : KTB1306Y  
 Q104 : DTC124ES  
 Q105,106 : KTC2878
- SIGNAL LINE  
 ————— GND LINE  
 ————— +B LINE  
 ————— -B LINE

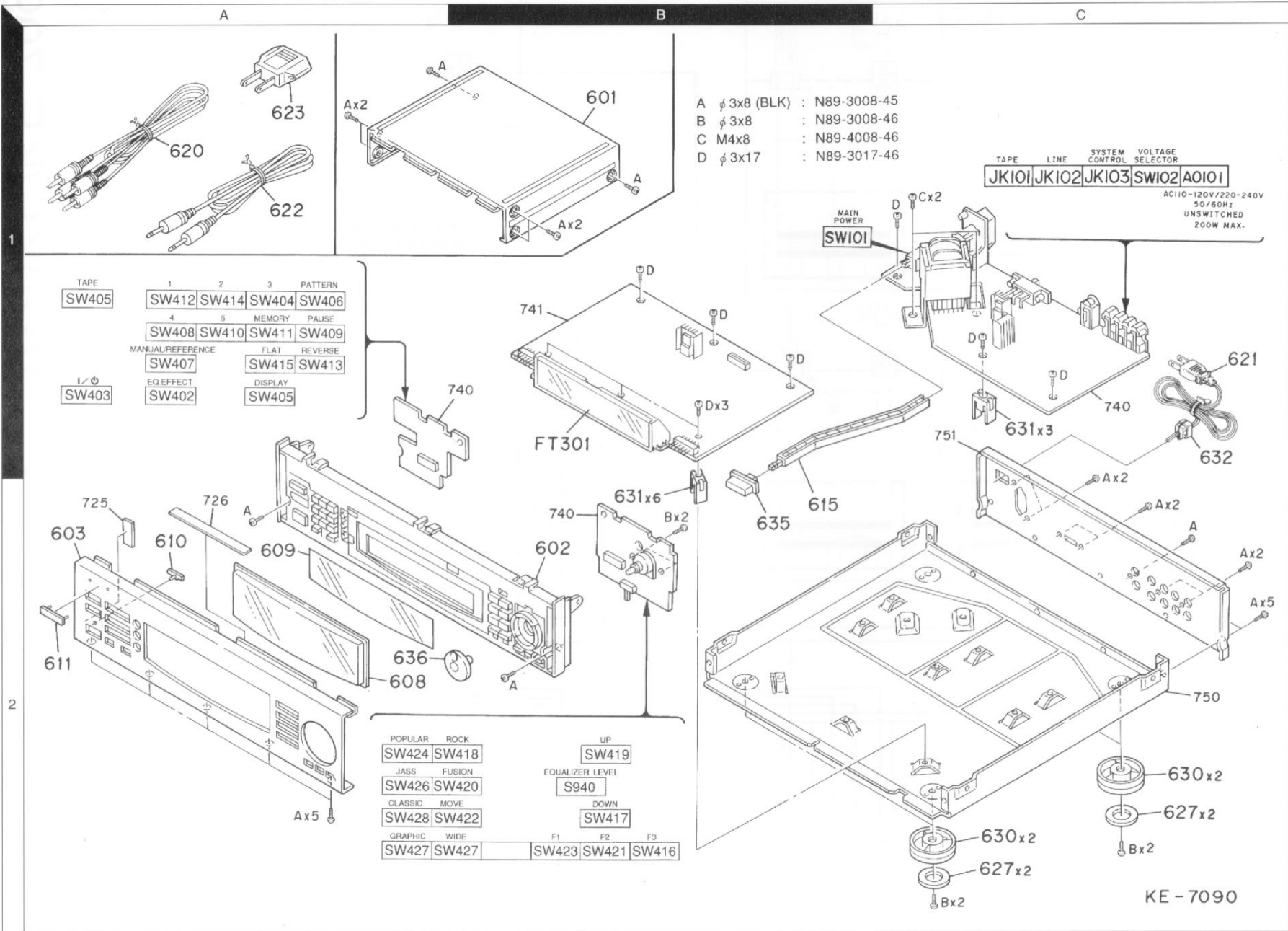
KE-7090(M) (2/2)

high  
may  
or on

Y09-4560-10

# 1070KE/KE-7090

## KENWOOD



EXPLODED VIEW (UNIT)

1070KE/KE-7090 1



# 1070KE/KE-7090

## SPECIFICATIONS

### [Audio block]

Total harmonic distortion (at 1 kHz, Flat) .....	0.005%
Frequency response .....	10 Hz ~ 70 kHz, $\pm 3$ dB
Signal to noise ratio (IHF '66) .....	108 dB
<b>Graphic equalizer characteristics</b>	
Adjustment center frequencies .....	40 Hz, 63 Hz, 98 Hz, 160 Hz, 250 Hz, 400 Hz, 625 Hz, 1 kHz, 1.5 kHz, 2.5 kHz, 3.9 kHz, 6.3 kHz, 10 kHz, 16 kHz
Equalizer characteristic variable range .....	$\pm 12$ dB
<b>Input impedance</b>	
Line .....	47 k $\Omega$
Maximum output voltage (at 1% T.H.D.) .....	7 V
<b>Output Impedance</b>	
Line .....	2.2 k $\Omega$

### [General]

<b>AC outlets</b>	
For the U.S.A. and Canada	
UNSWITCHED .....	1 (200W, 1.6A max.)
For other countries	
UNSWITCHED .....	1 (200W max.)
Power consumption .....	18 W
<b>Dimensions</b> .....	
W: 440 mm (17-5/16")	
H: 123 mm (4-7/8")	
D: 371 mm (14-5/8")	
Weight (net) .....	4.2 kg (9.3 lb)

### Note :

We follow a policy of continuous advancements in development. For this reason specifications may be changed without notice.

### Note:

Component and circuitry are subject to modification to insure best operation under differing local conditions. This manual is based on Europe (E) standard, and provides information on regional circuit modification through use of alternate schematic diagrams, and information on regional component variations through use of parts list.

## KENWOOD CORPORATION

14-6, Dogenzaka 1-chome, Shibuya-ku, Tokyo, 150 Japan

### KENWOOD SERVICE CORPORATION

P.O. BOX 22745, 2201 East Dominguez St., Long Beach, CA 90801-5745, U.S.A.

### KENWOOD ELECTRONICS CANADA INC.

6070 Kestrel Road, Mississauga, Ontario, Canada L5T 1S8

### KENWOOD ELECTRONICS LATIN AMERICA S.A.

P.O. BOX 55-2791, Piso 6 plaza Chase, Cl. 47 y Aquilino de la Guardia Panama, Republic de Panama

### KENWOOD ELECTRONICS U.K. LIMITED

KENWOOD House, Dwight Road, Watford, Herts., WD1 8EB., United Kingdom

### KENWOOD ELECTRONICS BENELUX N.V.

Meachelsesteenweg 418, B-1930 Zaventem, Belgium

### KENWOOD ELECTRONICS DEUTSCHLAND GMBH

Rembriker Str. 15, 63150 Heusenstamm, Germany

### KENWOOD ELECTRONICS FRANCE S.A.

13 Boulevard Ney, 75018 Paris, France

### KENWOOD ELECTRONICS ITALIA S.p.A.

Via G. Sirtori, 7/9 20129, Milano, Italy

### KENWOOD IBERICA S.A.

Bolivia, 239-08020 Barcelona, Spain

### KENWOOD ELECTRONICS AUSTRALIA PTY. LTD.

(A.C.N. 001499 074)

P.O. Box 504, 8 Figtree Drive, Australia Centre, Homebush, N.S.W. 2140, Australia

### KENWOOD & LEE ELECTRONICS, LTD.

Unit 3712-3724, Level 37, Tower 1, Metroplaza, 223 Hing Fong Road, Kwai Fong N.T., Hong Kong

### KENWOOD ELECTRONICS GULF FZE

P.O. Box 61318, Jebel Ali, Dubai, U.A.E.

### KENWOOD ELECTRONICS SINGAPORE PTE LTD.

No. 1 Genting Lane #02-02, KENWOOD Building, Singapore, 349544

### KENWOOD ELECTRONICS (MALAYSIA) SDN BHD.

#4.01 Level 4, Wisma Academy Lot 4A, Jalan 19/1 46300 Petaling Jaya Selangor Darul Ehsan Malaysia